

## NO CODE, NO LIMITS

A rare combination of power and simplicity, AutoMate BPA Server is a major advance in the automation of systems and applications across multiple-machine, cross-platform networks.

This software is by far one of the easiest-to-use automation products I have tried. And the functionality is robust enough to allow me to run processes and do reporting nightly, adding a new level of functionality to our company's IT infrastructure.

Scott Hunt  
IT Manager  
Ferry Industries, Inc.

By automating much of our core processing, AutoMate has freed our staff to bring more value to the bank's products and services instead of wasting time on mindless, time-consuming tasks. After months of searching and testing, I have yet to discover any software that even comes close to this feature-rich, reliable solution.

Jeff Stafford  
CIO  
Community Bank & Trust of Florida

## WORKFLOW DESIGNER

Workflow Designer is a powerful tool for designing and developing automated business processes. Icons including tasks, conditions, and flow controls are dragged-and-dropped using a highly visual, intuitive interface. Aside from creating new objects, reusable objects can be dropped into Workflow Designer from the object repository. This makes incorporating previously created tasks, schedule templates, and conditions into new workflows a snap, and eliminates duplication of effort.

### Tasks

Tasks are the workhorses of workflows and provide the instructions for automated execution on agents. They are built using the Task Builder.

### Conditions

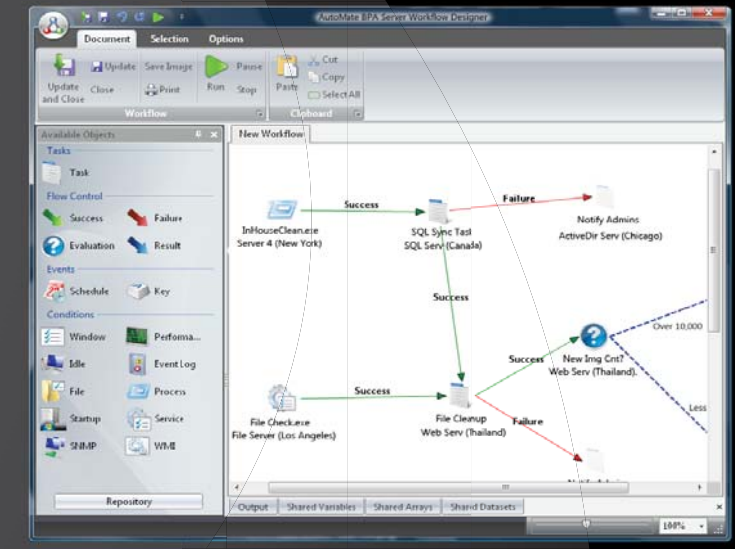
Conditions arise from system, application, and network events that transpire across the automation network. They make workflows nimble because automation is triggered and resumed by events, not just predefined, hard-coded calendars. They make workflows intelligent because decisions are made based on a network's or system's status.

### Flow Controls

Flow controls include the elements that relate tasks and conditions and make the workflow a cohesive unit. Examples include success and failure arrows, which show the path the workflow travels depending on the success or failure of the object in question.

### Machine / Agent Specification

Workflow Designer enables designers to specify which machines/agents execute the various tasks and conditions within a given workflow. Connected machines appear in a list in conjunction with the workflow objects, and the designer simply selects the appropriate machine for executing the task or evaluating the condition.

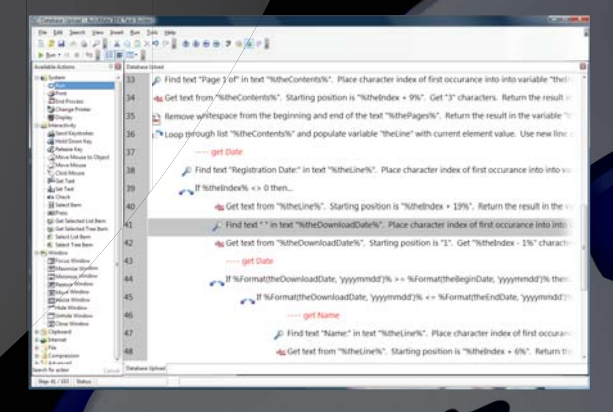


## DEVELOP

DESIGN, BUILD, AND TEST automated business processes WITHOUT WRITING CODE. Create high-level workflows with ease, and develop detailed tasks with intuitive, drag-and-drop tools.

## TASK BUILDER

Task Builder is an extremely powerful application for building sophisticated automation tasks without writing code. The interface consists of a palette of Actions and a Steps pane. Task developers simply drag-and-drop plain-English Actions into the sequence of Steps desired for execution. Flexible tasks can be designed using variables, loops, and conditional decision-making Actions. Just about any IT process can be automated using the 200+ Actions provided with Task Builder.



## DEPLOY

DEPLOY AUTOMATION across multi-machine, cross-platform networks with a few mouse clicks. INTEGRATE AUTOMATED EXECUTION into business processes involving ONE MACHINE or the ENTIRE ENTERPRISE.

### SERVER

The server is the repository of all information necessary for the management of an organization's automation needs. Server stores objects in an XML file, or optionally, in a connected database server such as Microsoft SQL Server. Server objects such as workflows, tasks, conditions, and flow controls enable intelligent reuse of resources. In operation, the server is the multi-threaded communication hub between connected agents which are responsible for workflow execution and processing. Development and management clients connect to the server over TCP/IP for workflow and task development, as well as for server administration.

### AGENT

To enable multiple-machine, cross-platform automation, the server component connects with execution agents via TCP/IP. Agents can detect system, application and network events/conditions that can trigger workflows, as well as initiate conditional branching within workflows. Agents are also able to interpret and execute detailed tasks sent by the server.

There are two versions of agent, one for Windows environments that has a wide range of capabilities for detecting events and automating complex processes without code, and the other for running executables, batch files, and scripts on any Java-enabled machine.

## SERVER MANAGEMENT CONSOLE

The Server Management Console provides centralized management and administration.

### User-Based Roles, Rights, & Views

Users must log into Server Management Console, and administrators can specify roles, rights, and views. Administrators can also specify the policies for promoting objects from the development and testing phases to actual production, as well as what objects a user can access and/or see.

### Agent Management

Server Management Console provides tools for installing and uninstalling agents responsible for workflow processing. Administrators can see all agents connected to the server and the licensed number of agents the server can support.

### Reusable Object Repository

Administrators and developers have access to all objects in the repository including workflows, tasks, and conditions. These objects can easily be edited and incorporated into new workflows.

### Reporting

To view workflow execution in real time or track historical performance, Server Management Console provides a rich reporting interface. A wide selection of summary graphs, charts and tables display the status and properties of workflows. Operators can drill down to specific details of a workflow with a click of the mouse. Workflow reports can also be utilized for high-level capacity planning and change management.

## MANAGE

CENTRALIZE STORAGE AND CONTROL. Eliminate code maintenance and duplicate effort. Visualize business process automation with REAL-TIME NOTIFICATION AND REPORTING. Manage by exception.



**THE BUSINESS PROCESS AUTOMATION SERVER FROM NETWORK AUTOMATION**

AutoMate BPA Server is a revolutionary advance in the automation of systems and applications across multiple-machine, cross-platform networks. This easy-to-use software facilitates designing, building, and automating business processes without writing code. It logically separates high-level workflow design from the complexity of building detailed automation tasks, and it provides automated execution and centralized control over business processes involving one machine or the entire enterprise.

**LICENSING**

AutoMate BPA Server 7™ offers two licensing options: Standard and Enterprise.

	STANDARD EDITION	ENTERPRISE EDITION
Maximum Number of Agents	10	Unlimited
User-Based Access Control		X
Workflow and Task Auditing		X
Object Promotion		X
Enhanced Reporting Features		X
OLE DB Integration for Data Storage	X	X
Server Management Console	X	X
Workflow Designer	X	X
Task Builder With Over 200 Actions	X	X

**MINIMUM SUPPORTED O.S.**

Windows 2003 Server  
 Windows Vista  
 Windows XP

**REQUIRED HARDWARE**

Intel or AMD CPU running at least 1.5 GHz  
 (2 GHz or higher recommended)  
 At least 512 MB RAM (1 GB or more recommended)  
 200 MB disk space (500 MB free recommended)

**CONTACT**

Network Automation, Inc.  
 654 S. Western Ave.  
 Los Angeles, CA 90005

[www.networkautomation.com](http://www.networkautomation.com)

Sales: (888) 786-4796 (toll free)  
[sales@networkautomation.com](mailto:sales@networkautomation.com)  
 Support: (213) 738-6966  
[support@networkautomation.com](mailto:support@networkautomation.com)

**User Resource Center:**  
 (tutorials, knowledgebase, newsletter,  
 product updates, discussion forums, more)  
[www.networkautomation.com/urc](http://www.networkautomation.com/urc)

